



TRENCHLESS SOLUTIONS

SINCE 1956

# PD-7 MAINLINE PIPE BURSTING SYSTEM



DURABLE • COMPACT • ECONOMICAL • PRODUCTIVE

**THE PD-7 SYSTEM OFFERS AN EFFICIENT AND COST EFFECTIVE  
ALTERNATIVE TO OPEN TRENCH PIPE REPLACEMENT**



## Model PD-7

The Model PD-7 is a static pipe bursting machine designed to replace exiting underground water, sewer or gas lines. Pipe bursting involves the breaking of an existing pipe, expanding the broken pipe shards into the surrounding soil while simultaneously pulling in the new carrier line.

The proven technology of pipe bursting reduces social costs and traffic disruption. This trenchless method is inherently a greener choice when compared to open cut. Since pipe bursting follows the existing utility path the excavation required is reduced by 85 percent and potential risk of damaging adjacent utilities is greatly reduced.

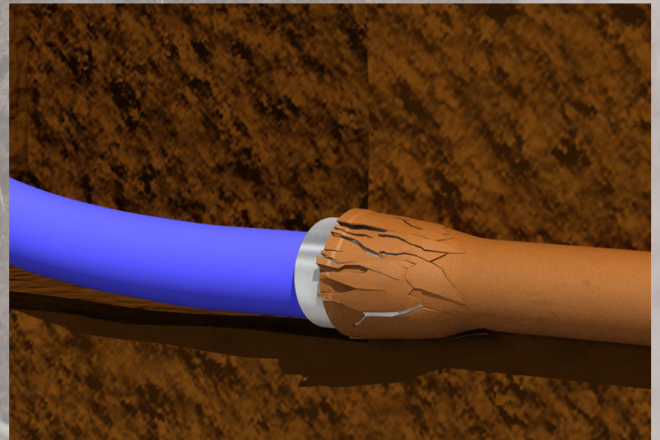
The PD-7 is excellent in areas where space is limited. This machine will operate from a pit only 72 inches long. Despite its small size the PD-7 has a pulling force of 112,000 lbs @ 3,000 psi and a maximum pull rate of 7 feet/minute. The PD-7 can install up to 12 inch ID pipe in most compressible soils.

## Minimum Maintenance- Maximum life

The high strength steel frame is protected from wearing forces by a chrome plated steel guide bar. The pushing mechanism slides on bronze bushings and uses special wiper seals to keep the lubricant in and the water and dirt out. The patented mechanism provides long service with a minimum of maintenance.

## How it works

The Model PD-7 uses a cylinder actuated positive-locking non-slip jaw assembly that provides a steady force during the burst process. Sections of 2" X 2.5' solid steel rods are screwed together and thrust through the old pipe. When the target pit is reached, the lead head is removed and the appropriate bursting head is attached. The pipe that is to be installed is attached with a grip to the bursting head and the rods are retrieved until the pipe is installed.



# SPECIFICATIONS

## PD-7

### Unit Dimensions

Height 19.5 inches

Length 72 inches

Width 21.5 inches

Weight 1040 pounds

For More Information Contact:



MANUFACTURED BY:

**Pow-r Devices, Inc.**  
**1400 Commerce Pkwy**  
**Lancaster, NY 14086**  
**Tel: (716) 706 1057**  
**Toll Free: 800 344 6653**

### Capability

Force 112,000 pounds

Rate 7 feet/minute

Stroke 12 inches

Pipe size 3 to 12 inches

## ACCESSORIES



Stationary Hydraulic  
Power Unit



Pull back Expanders  
and Adapters  
(Unlimited Variations)



Pipe Grips for Virtually  
Every Type of Pipe